

PROJECT
 PROPOSED TWO BEDROOM
 RESIDENTIAL APARTMENT
 FOR PRC AT NAKURU.

TITLE
 TYPICAL GROUND TO
 FOURTH FLOOR PLAN.

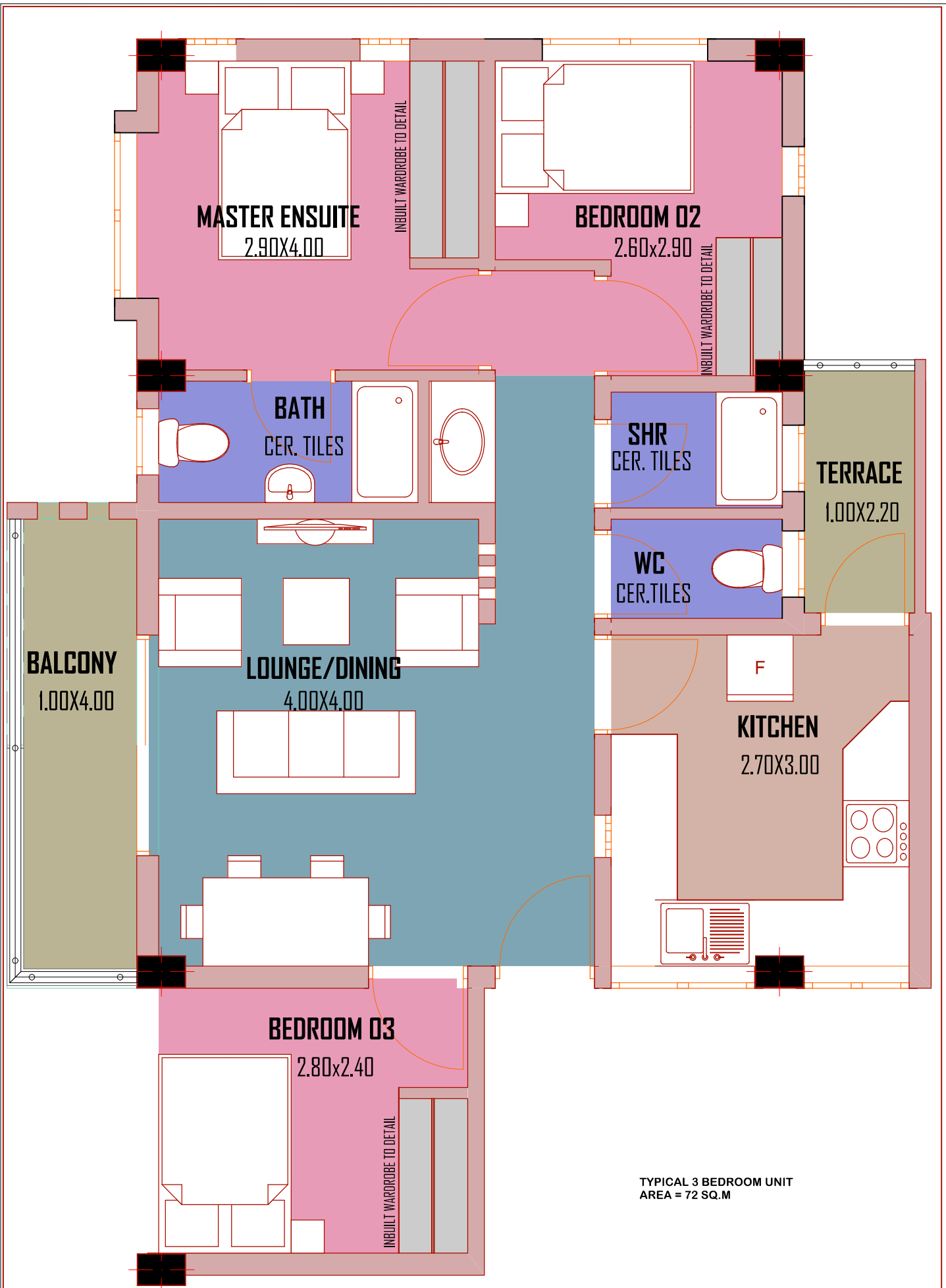
SCALE
 1:100
DRAWING NO.
 04

DATE
 16TH JUNE 2017.


DRAWN BY
 R.K.L
CHECKED BY
 C.N.W

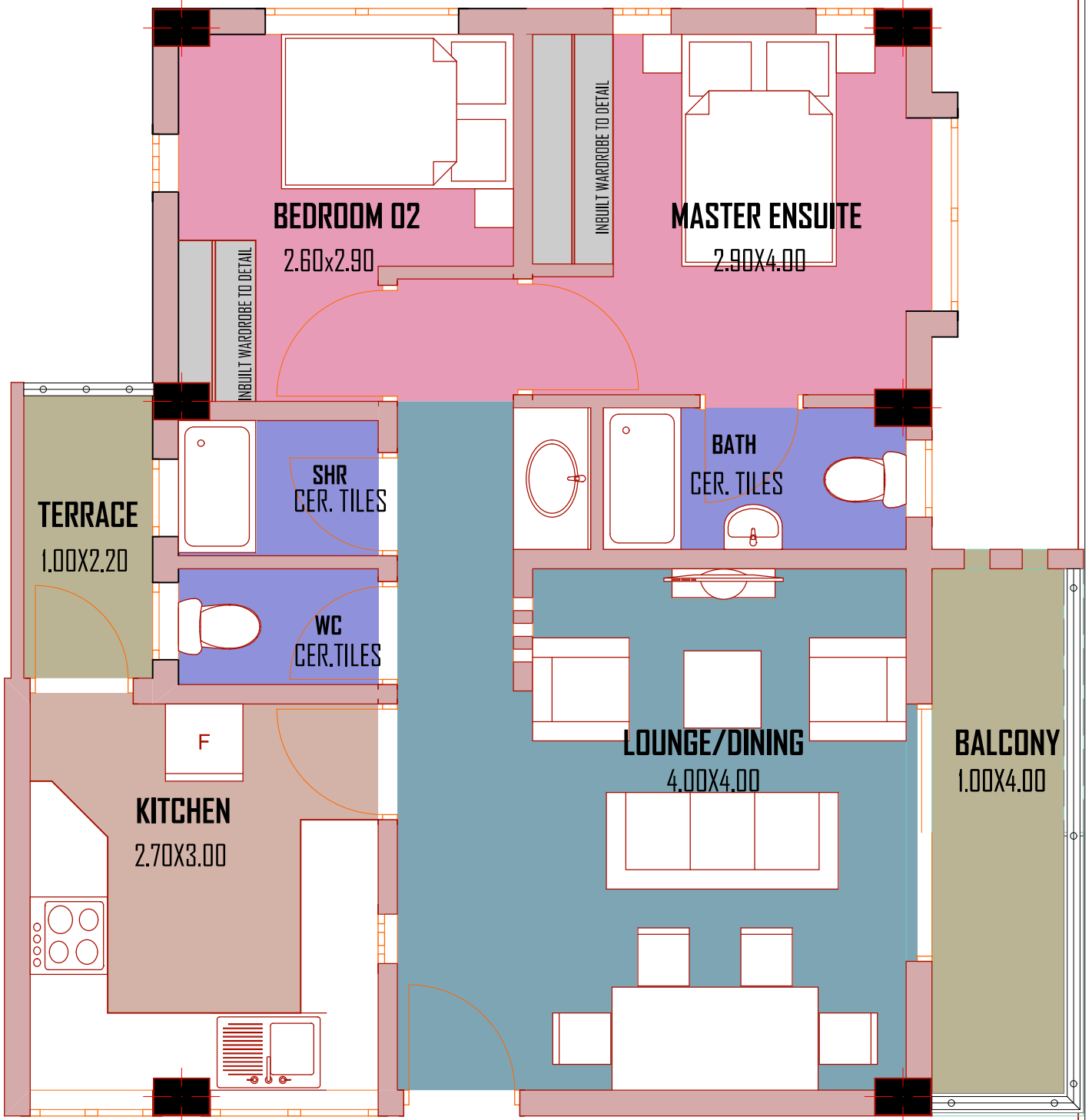
CONSULTANT
DEXDIGN LIMITED
 ARCHITECTS & INTERIOR DESIGNERS
 P.O BOX 40270-00100, TEL. :020-556521,
 NAIROBI






TYPICAL 3 BEDROOM UNIT
AREA = 72 SQ.M

PROJECT PROPOSED TWO BEDROOM RESIDENTIAL APARTMENT FOR PRC AT NAKURU.	TITLE TYPICAL 3 BEDROOM UNIT	SCALE 1:30 DRAWING NO. 05	DATE 16TH JUNE 2017.	DRAWN BY R.K.L CHECKED BY C.N.W	CONSULTANT DEXDIGN LIMITED ARCHITECTS & INTERIOR DESIGNERS P.O BOX 40270-00100, TEL :020-556521, NAIROBI	
---	---	--	--------------------------------	--	--	---



TYPICAL 2BEDROOM UNIT
AREA = 64 SQ.M

PROJECT PROPOSED TWO BEDROOM RESIDENTIAL APARTMENT FOR PRC AT NAKURU.	TITLE TYPICAL 2 BEDROOM UNIT	SCALE 1:30 DRAWING NO. 06	DATE 16TH JUNE 2017.	DRAWN BY R.K.L CHECKED BY C.N.W	CONSULTANT DEXDIGN LIMITED ARCHITECTS & INTERIOR DESIGNERS P.O BOX 40270-00100, TEL :020-556521, NAIROBI	
---	---	--	--------------------------------	--	--	---